

Weekly Report

2016 Week 8 (February 21 – February 27, 2016) through 2017 Week 8 (February 19 – February 25)

Department of Health and Human Services
Division of Public and Behavioral Health
Office of Public Health Informatics and Epidemiology



Brian Sandoval
Governor
State of Nevada

Richard Whitley, MS
Director
Department of Health and Human Services

Cody L. Phinney, MPH
Administrator
Division of Public and Behavioral Health

John DiMuro, DO, MBA
Chief Medical Officer
Division of Public and Behavioral Health

Data for the graphs and tables on the following pages are provisional and may be updated as additional information becomes available.

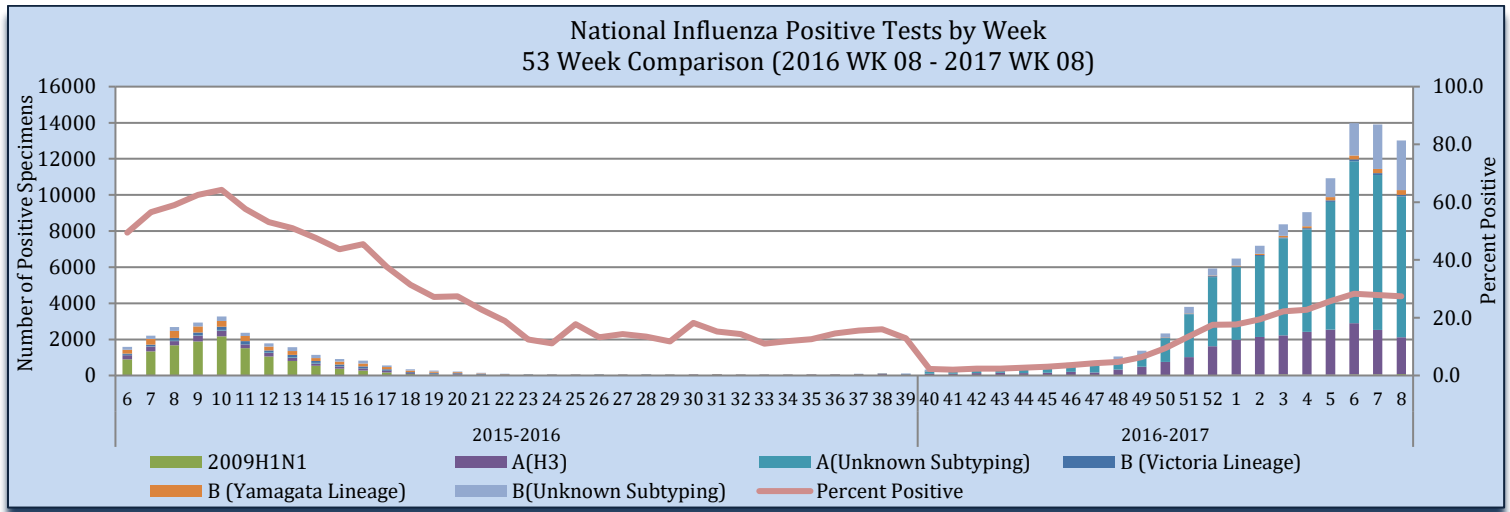
Purpose

The purpose of this report is to provide an overview of and statistics for the influenza season in Nevada for the local public health authorities, sentinel providers and the public.

Sentinel Provider Data: Influenza-Like Illness Network Surveillance (ILINet)

Respiratory specimens are tested for influenza by the World Health Organization (WHO) and National Respiratory and Enteric Virus Surveillance System (NRVESS) collaborating laboratories by sub-type. During week 08, there were 47,450 specimens collected and tested for influenza, of those 13,024 were positive (27.4%).

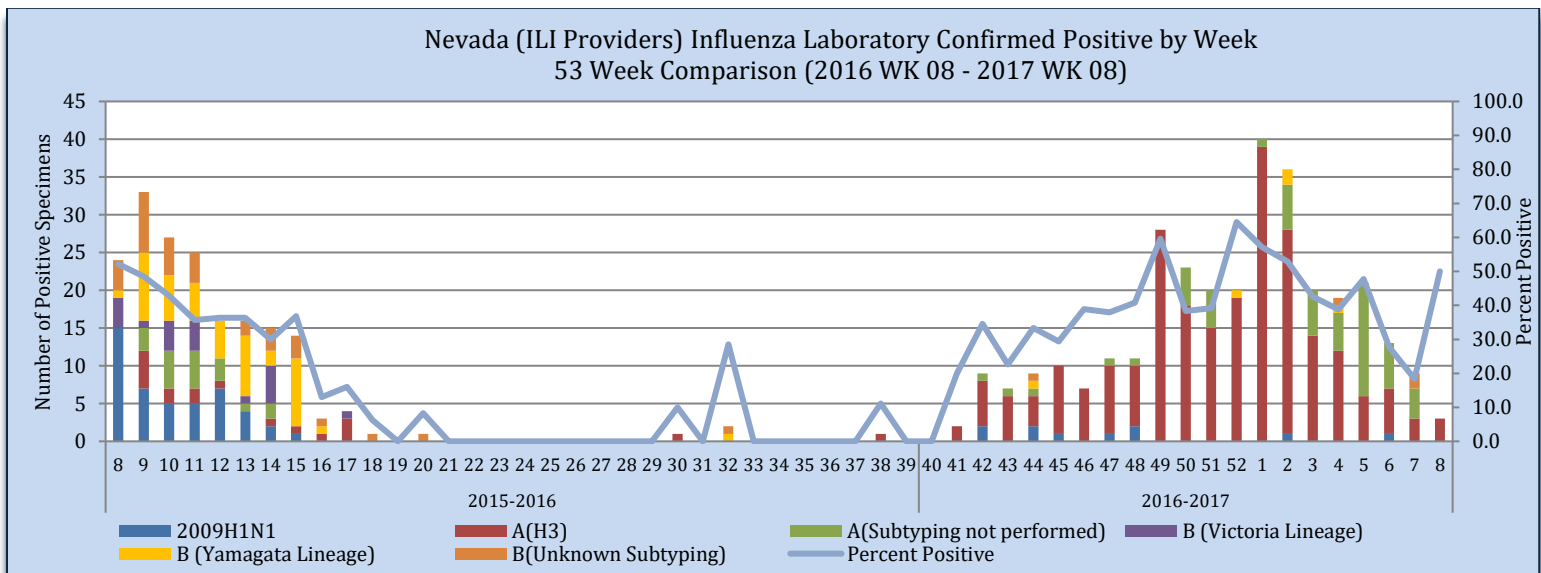
Figure 1



Source of Data: CDC: FluView Weekly Report.

The Nevada total includes laboratory tests for all Nevada residents tested by sentinel providers including out of state laboratories. During week 08, there were 6 specimens collected and 3 were positive (50%). There is a two week delay for laboratory surveillance. Data are subject to change as we receive additional reports.

Figure 2



Source of Data: CDC: ILINet.

Nevada State Public Health Laboratory (NSPHL) has tested 281 specimens for influenza from sentinel providers, of which there have been 243 positive (86.5%). Southern Nevada Public Health Laboratory (SNPHL) has tested 57 specimens this season of which there have been 5 positives. Nationally, there have been 604,904 specimens sent to the WHO and NERVSS laboratories of which 101,240 have been positive (16.7%). The national numbers in Table 1 are reflected in Figure 1. The state of Nevada data in Table 1 is reflected in Figure 2. The Nevada total includes laboratory test for all Nevada residents tested by sentinel providers, including out of state laboratories.

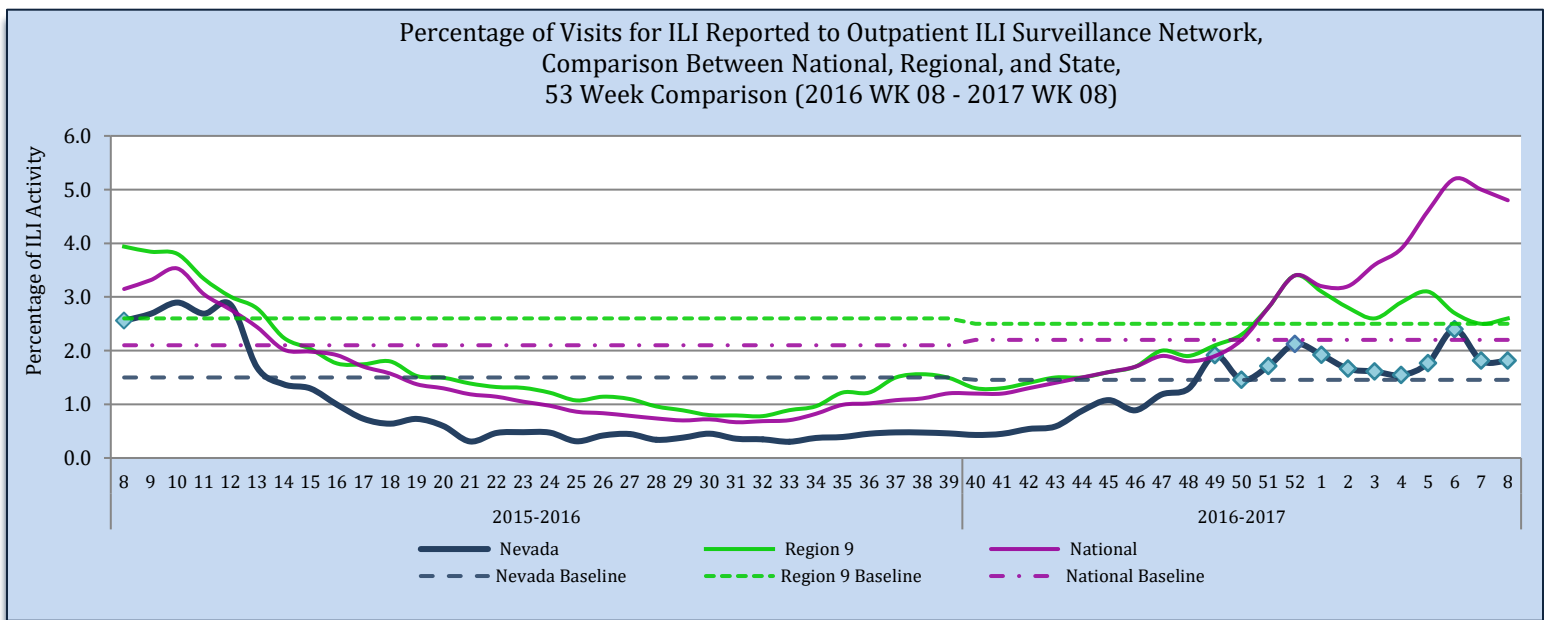
Table 1

	Influenza Specimens Tested State and Nationally through Sentinel Providers										
	NSPHL	SNPHL	All Other Laboratories	State of Nevada (Week 08)		State of Nevada (Season)		National (Week 08)		National (Season)	
				#	%	#	%	#	%	#	%
Specimens Tested	281	57	441	6		779		47,450		604,904	
Influenza Positives	243	5	70	3	50.0	318	40.8	13,024	27.4	101,240	16.7
Influenza A:	239	5	65	3	100.0	309	97.2	9,911	76.1	86,545	85.5
A (2009 H1N1)	9	0	1	0	0.0	10	3.2	70	0.7	605	0.7
A (H3)	230	5	6	3	100.0	241	78.0	2,049	20.7	23,560	27.2
A (Sub-typing not performed)	0	0	58	0	0.0	58	18.8	7,792	78.6	62,380	72.1
Influenza B:	4	0	5	0	0.0	9	2.8	3,113	23.9	14,702	14.5
B (Victoria Lineage)	0	0	0	0	0.0	0	0.0	89	2.9	833	5.7
B (Yamagata Lineage)	4	0	1	0	0.0	5	55.6	267	8.6	1,333	9.1
B (Sub-typing not performed)	0	0	4	0	0.0	4	44.4	2,757	88.6	12,536	85.3

Source of Data: CDC: FluView Report and CDC: ILINet.

Influenza-like illness (ILI) Surveillance Network has each sentinel provider report the number of patients seen that meet the ILI case definition and the total number of patients seen for any reason each week. The “percentage of visits for ILI” is the number of ILI patients divided by the total number of patients visit per week. Nevada’s percentage of ILI visits for week 08 is 1.8% which is above the state baseline of 1.5%. Region 9 ILI percentage for week 08 is 2.6% which is the above the region baseline 2.5%. Region 9 includes the following states/territory: Arizona, California, Guam, Hawaii, and Nevada. The national ILI percentage for week 08 is 4.8% which is above the national baseline 2.2%.

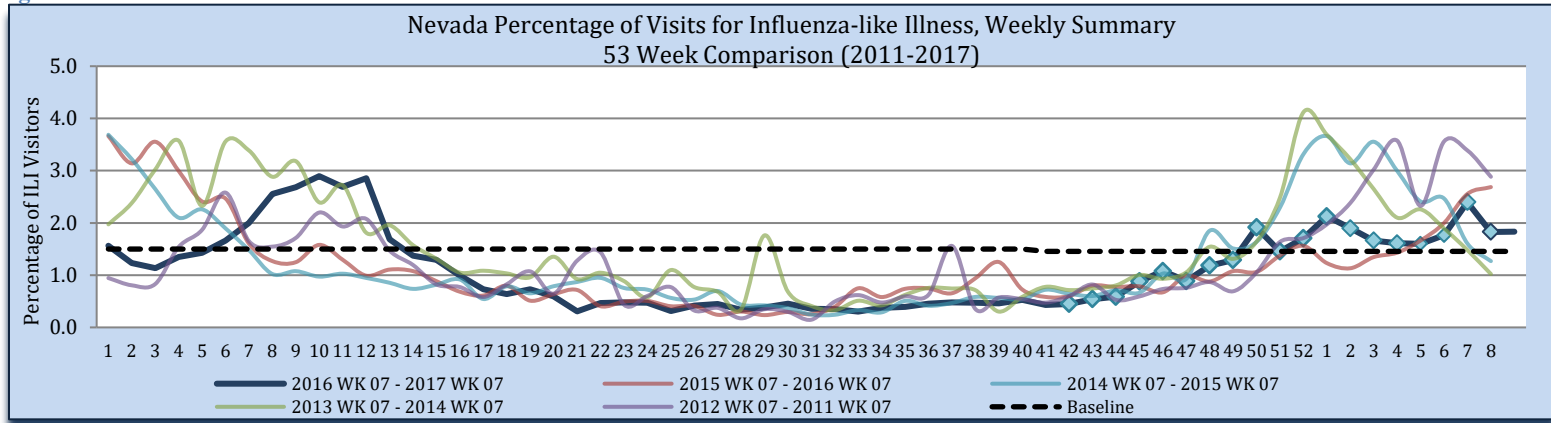
Figure 3



Source of Data: CDC: Flu View Report and CDC: ILINet.

During week 08, 1.8% of visits to sentinel providers were due to ILI; this is lower than the 2015-2016 influenza season (2.6%). There were 11,331 patients seen by sentinel providers during week 08, of which 208 patients presented with ILI; week 08 of 2016, there were 553 patients seen with ILI (20,586 total patients seen).

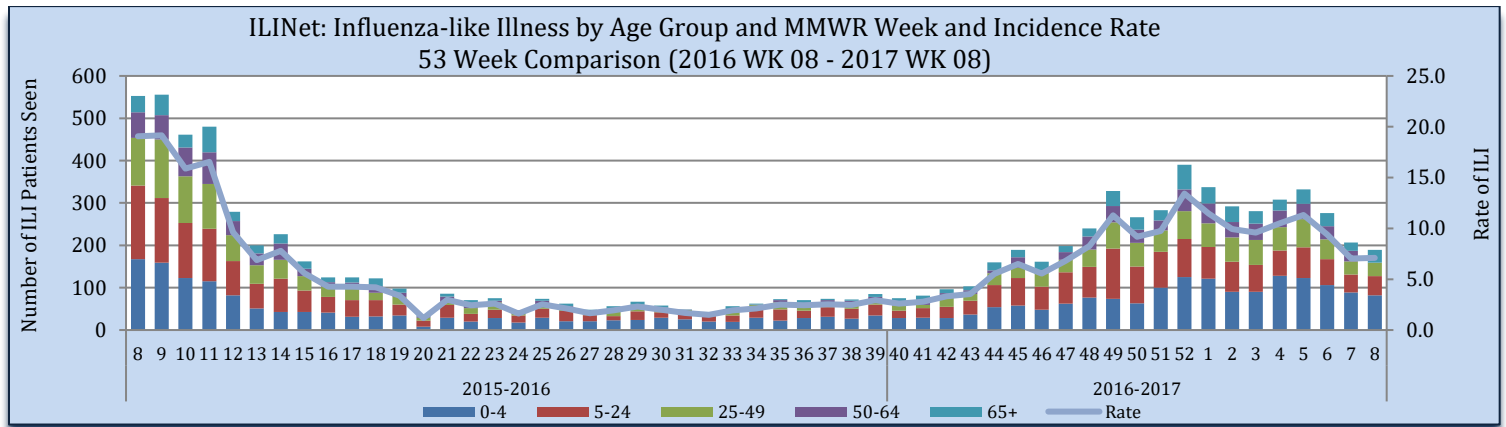
Figure 4



Source of Data: CDC: ILINet.

Influenza-like Illness is reported by age groups. During week 08, patients age 0-4 were the greatest number of patients seen with ILI, at 82 patients seen. The rate for week 08 is 7.1 per 100,000 population. The rate is calculated by the number of patients presented with ILI, divided by the state population, multiplied by 100,000. The estimated state population for 2017 is 2,935,490.

Figure 5



Source of Data: CDC: ILINet.

Influenza Positive Surveillance (NBS and NETSS)

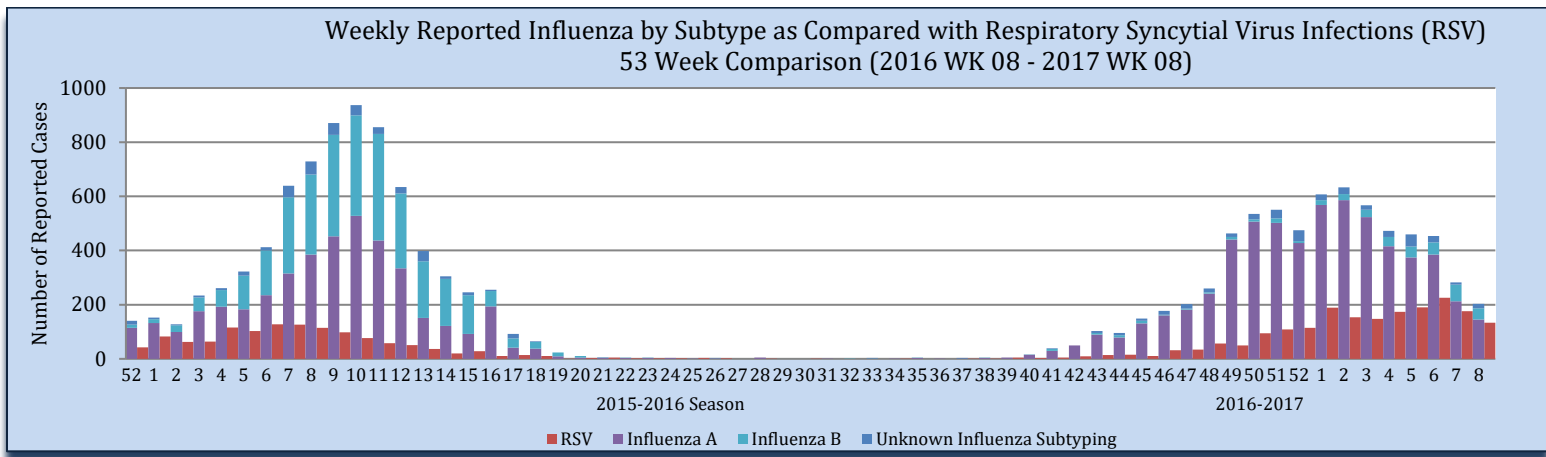
Positive cases of influenza are reported to the state health authority for surveillance purposes. Table 2 and Figure 6 reflect all positive influenza cases reported to the state. Types of influenza testing include commercial rapid diagnostic test (rapid), viral culture, fluorescent antibody, enzyme immunoassay, RT-PCR (PCR), and Immunohistochemistry. The two most common test types in Nevada are Rapid and PCR tests. During week 08, there were 203 influenza cases reported to the state, 145 influenza A, 41 influenza B and 17 unknown subtyping.

Table 2

Reporting Jurisdiction	Reported Influenza Cases by County Jurisdiction and Influenza Type							
	Current Week (Week 08)				Cumulative Influenza Season			
	A	B	Unknown	Total	A	B	Unknown	Total
Carson City Health and Human Services	7	1	0	8	771	6	2	779
Rural Community Health Services	8	0	1	9	550	24	34	608
Southern Nevada Health District	107	39	12	158	2,869	288	184	3,341
Washoe County Health District	23	1	4	28	1,876	57	133	2,066
State of Nevada	145	41	17	203	6,066	375	353	6,794

Source: OPHIE: NBS and SNHD: NETSS.

Figure 6



Source of Data: OPHIE: NBS and SNHD: NETSS.

Hospitalizations

There were 8 hospitalization associated with influenza reported to the state health authority for week 08.

Table 3

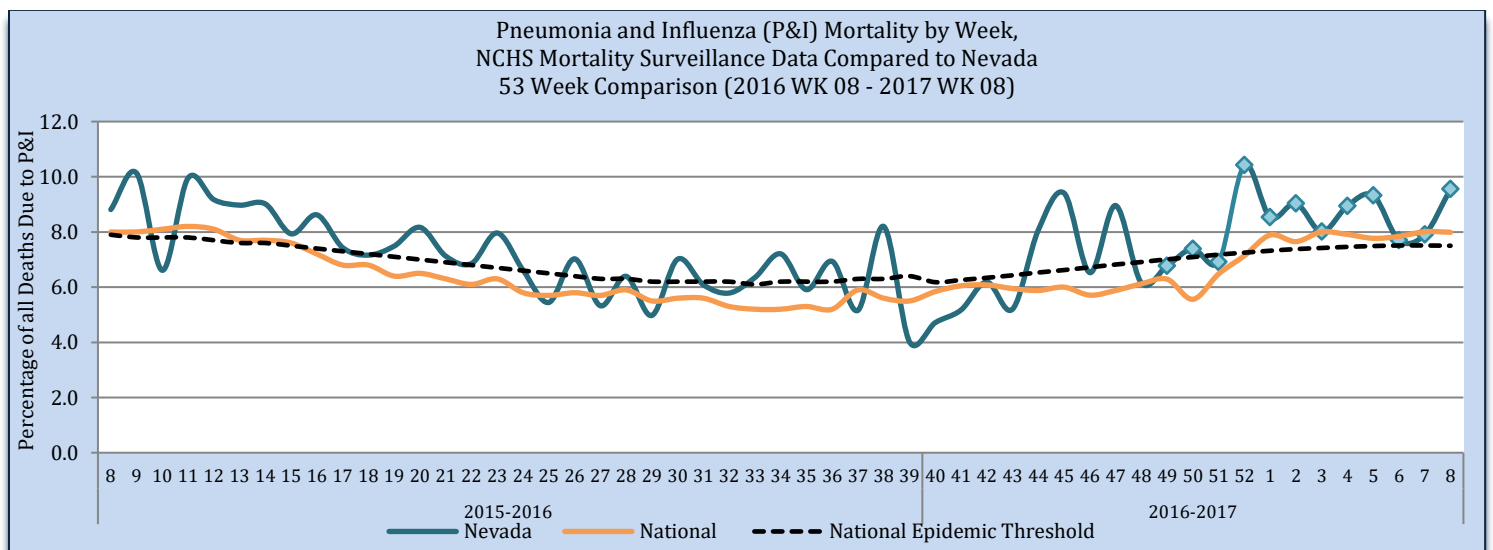
Reporting Jurisdiction	Influenza Hospitalizations			
	Current Week (Week 08)		Cumulative Influenza Season	
	#	%	#	%
Carson City Health and Human Services	0	0.0	29	6.2
Rural Community Health Services	0	0.0	16	3.4
Southern Nevada Health District	6	75.0	158	33.9
Washoe County Health District	2	25.0	263	56.4
State of Nevada	8	100	466	100

Source: Reported to Office of Public Health Informatics and Epidemiology from each Jurisdiction.

Pneumonia and Influenza (P&I) Mortality Surveillance

The Pneumonia and Influenza (P&I) mortality percentage is all deaths, where Pneumonia or Influenza is listed as the underlying or contributing cause of death, divided by the total deaths in Nevada for each week. As of March 20th, there were 39 P&I deaths and 408 total deaths for week 08 in Nevada. National baseline is 8% for week 08.

Figure 7



Source: OVR: WEVRRS and CDC: FluView.

Technical Notes

- Data are subject to changes, additionally, there is a lag in reporting.
- Influenza surveillance procedures vary by jurisdiction.
- Influenza-like illness (ILI): a fever greater than or equal 100°F with cough and/or sore throat.
- Percent positive: The number of positive influenza laboratory tests divided by the total number of tests performed.
- Incidence rate is per 100,000 population as estimated by the state demographer.

This report contains information from national and state-level data sources. Influenza surveillance data is collected by a various systems, including:

- Influenza-like Illness Network (ILINet): a sentinel surveillance system in collaboration with the Centers for the Disease Control and Prevention (CDC) where outpatient providers report ILI information weekly.
- National Electronic Telecommunication System for Surveillance (NETSS): a system whereby data is transmits to CDC. Influenza data collected through NETSS does not provide influenza sub-typing information.
- National Electronic Disease Surveillance System (NEDSS): a system for collecting data and monitoring disease trends and outbreaks.
- NEDSS Based System (NBS): an implementation of the NEDSS standards. It provides a secure, accurate, and efficient means of collecting, transmitting, and analyzing public health data.

Citations

1. CDC. FluView: A Weekly Influenza Surveillance Report. <http://www.cdc.gov/flu/weekly/pastreports.htm>.
2. Nevada State Demographer's Office. 2003-2020 ASRHO Estimates and Projections. Division of Public and Behavioral Health edition. Vintage 2015.
3. OPHIE. DPBH. NBS. 2015-2017. Accessed March 2017.
4. Office of Vital Records (OVR). DPBH. Web Enabled Vital Records Registry System (WEVRRS) [unpublished data]. 2015-2017. Accessed March 2017.
5. Southern Nevada Health District (SNHD). NETSS/Trisano. 2015-2017. Accessed March 2017.

Comments, suggestions, and requests for further information may be addressed to:

**NEVADA INFLUENZA SURVEILLANCE PROGRAM
OFFICE OF PUBLIC HEALTH INFORMATICS AND EPIDEMIOLOGY
500 DAMONTE RANCH PKWY, STE 657
RENO, NV 89521
TEL: (775) 684-5289
FAX: (775) 684-5999**

Compiled and Written by:

Liliana E. Wilbert, MPH

Reviewed by:

Jennifer Thompson
Melissa Peek-Bullock

Recommended Citation:

Division of Public and Behavioral Health. Office of Public Health Informatics and Epidemiology. Influenza Weekly Report, 2016 Week 08 (February 21, 2016) through 2017 Week 08 (February 25), Nevada. April 2017 i 08 edition 1.0.

This publication was supported by Cooperative Agreement Number TP000534-02 from the Centers for Disease Control and Prevention and/or Assistant Secretary for Preparedness and Response. Its contents are solely the responsibility of the authors and do not necessarily represent the official views of the Centers for Disease Control and Prevention and/or Assistant Secretary for Preparedness and Response.

